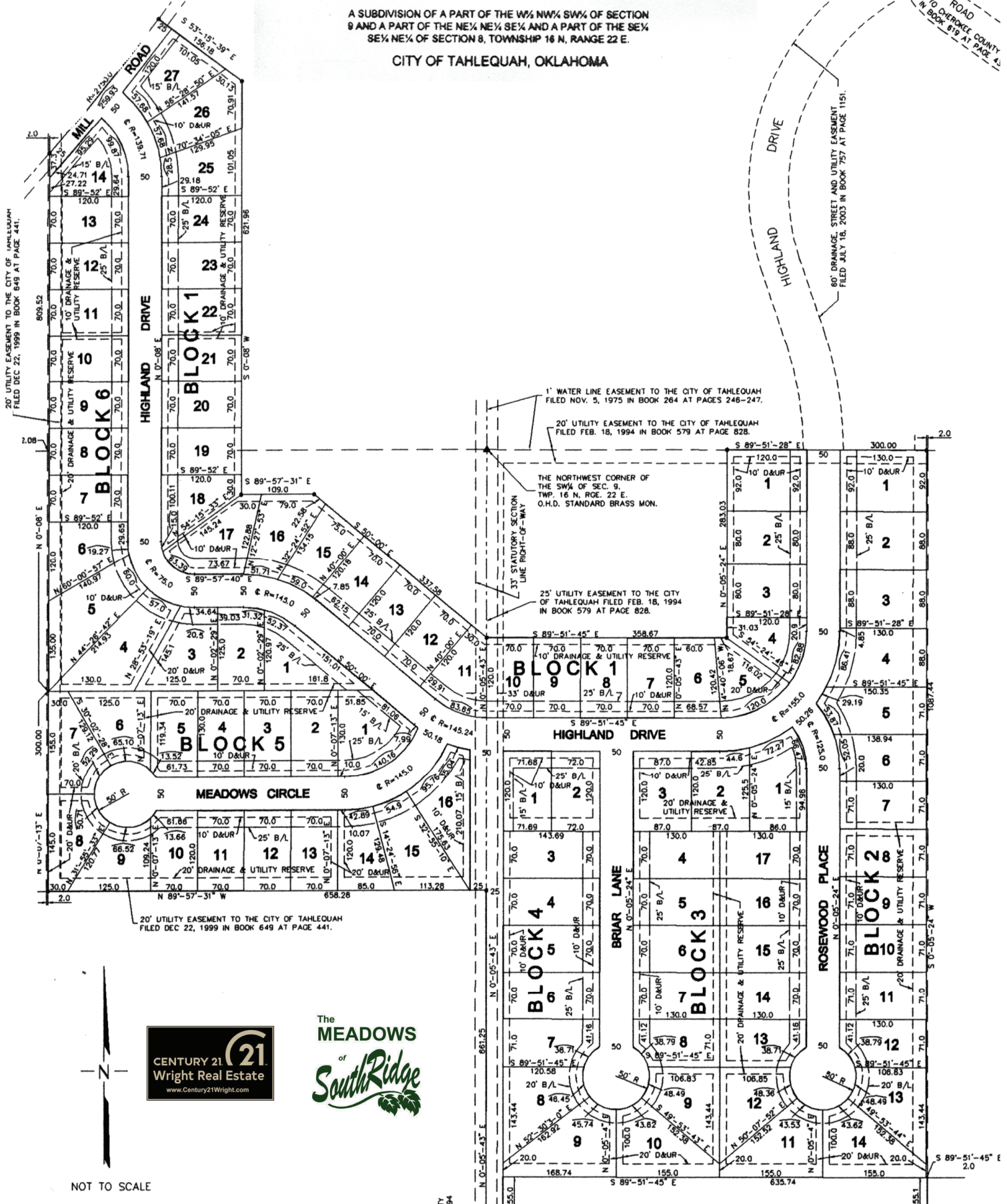


THE MEADOWS OF SOUTHRIDGE

A SUBDIVISION OF A PART OF THE W½ NW¼ SW¼ OF SECTION 9 AND A PART OF THE NE¼ NE¼ SE¼ AND A PART OF THE SE¼ SE¼ NE¼ OF SECTION 8, TOWNSHIP 16 N, RANGE 22 E.

CITY OF TAHLEQUAH, OKLAHOMA

SOUTHRIDGE ROAD
60' DRAINAGE, STREET AND UTILITY EASEMENT
FILED NOV. 17, 1998 IN BOOK 619 AT PAGE 43



NOT TO SCALE

